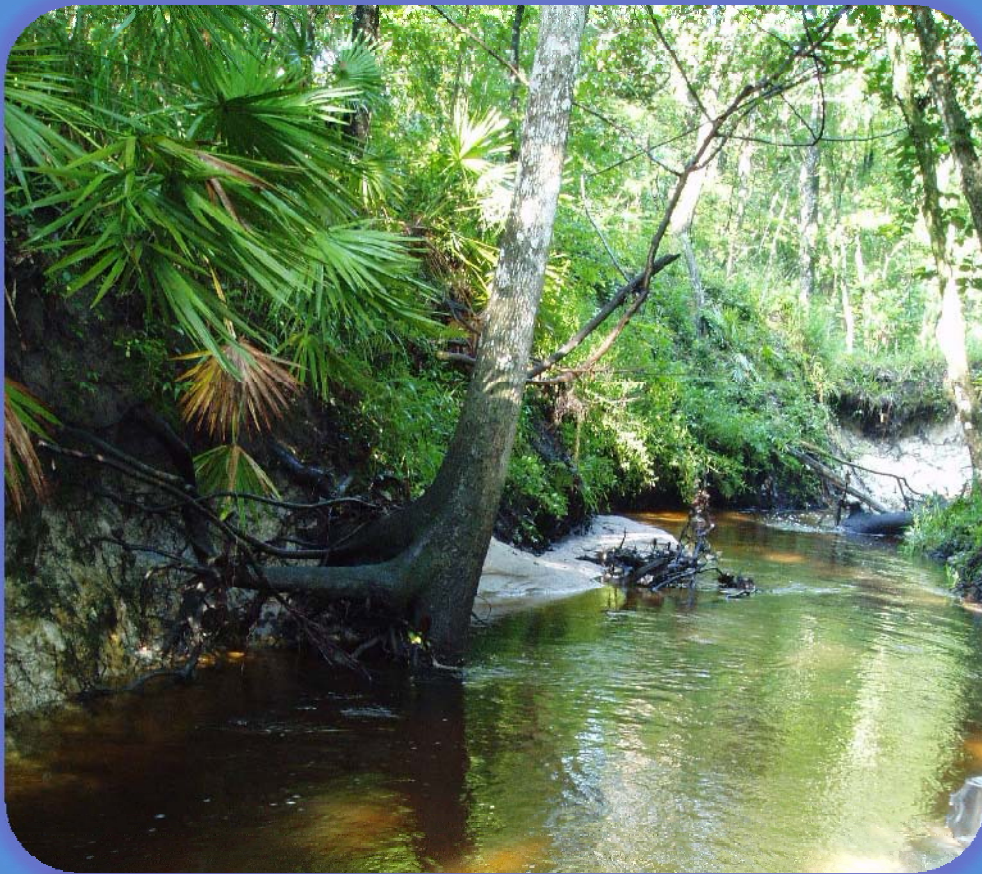




Alachua County
Environmental Protection Department

Water Resources Program

To protect and improve the water resources of Alachua County.



Programs

Inspection Program

Complaint Response

Monitoring

Outreach

Research & Publications

Budget & Staffing

- 4.95 FTE
- \$510,000



Alachua County
Environmental Protection Department

Hazardous Materials Management Program

Inspection Program



Waste Water Treatment
Plant

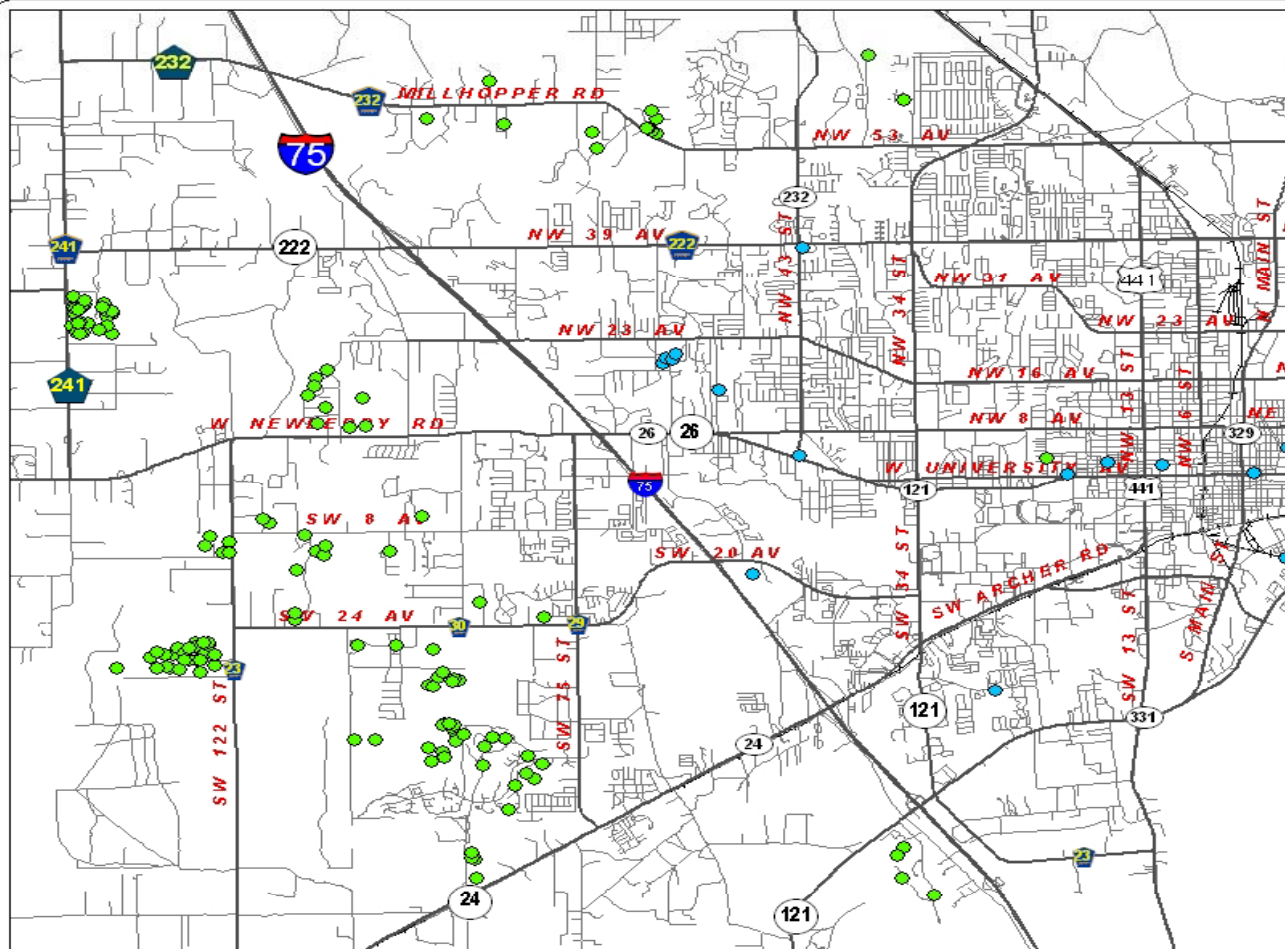


Landscape Irrigation



Alachua County
Environmental Protection Department

Water Resources Program



Alachua County Landscape Irrigation Code Implementation for 2nd Quarter (July-September)

Legend

- Complaint Violations (Task 1)
- Inspection Violations (Task 2)



1 0.5 0 1
Miles



DISCLAIMER: This map and the spatial data it contains are made available as a public service, to be used for reference purposes only. The Alachua County Environmental Protection Department provides this information AS IS without warranty of any kind, implied or expressed, regarding accuracy, completeness, or fitness of use. The quality of the data is dependent on the various sources from which each data layer is obtained.



Alachua County
Environmental Protection Department

Water Resources Program

Complaint Response

- Residential and commercial
- ~ 100 cases per year





Alachua County
Environmental Protection Department

Water Resources Program

Surface Water



Ambient Surface Water

13 stations in Orange Creek
Basin

8 stations in NW Alachua
County

Rural Fecal Coliform

11 sites throughout Alachua
County

Lakes

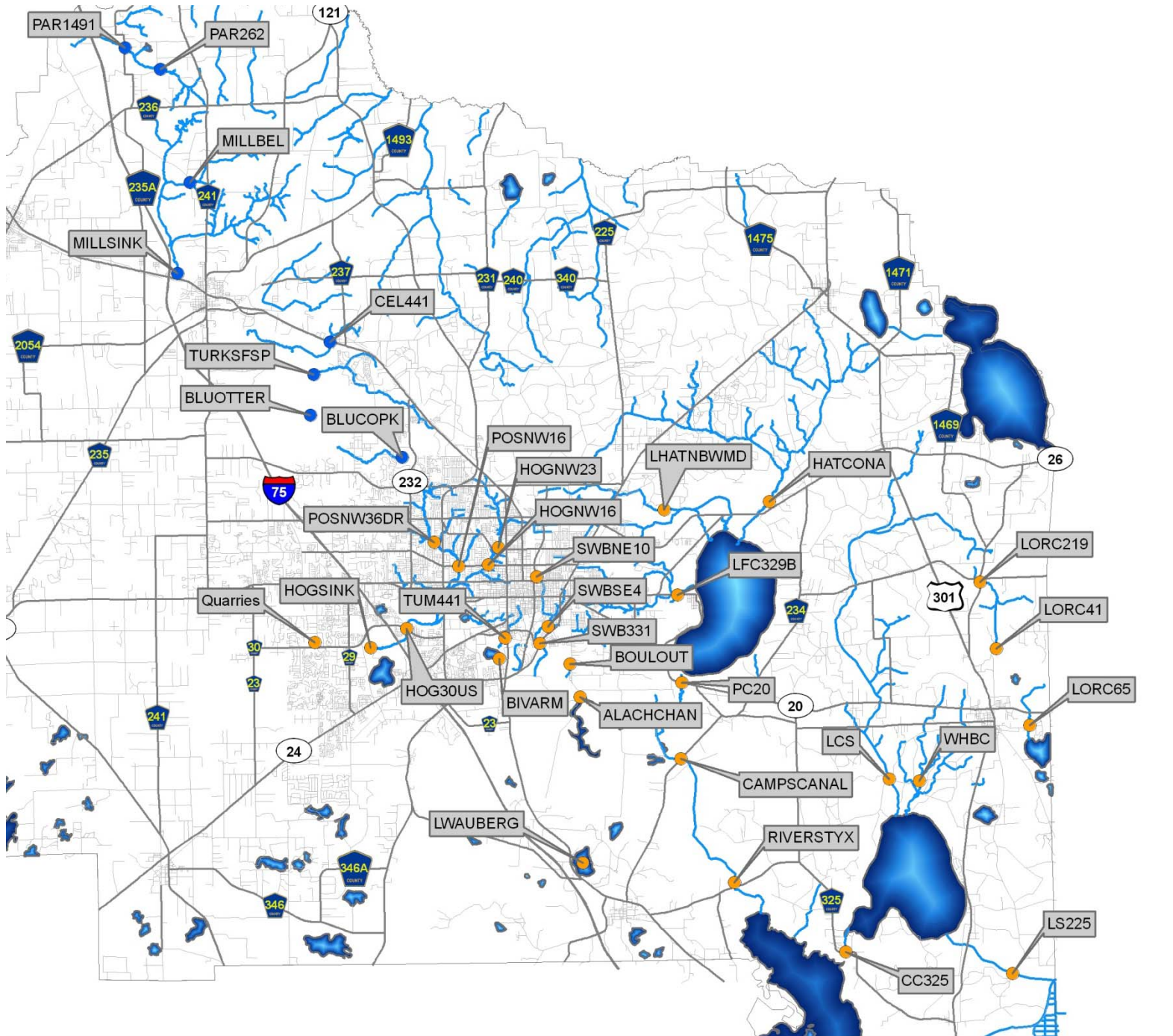
Bivens Arm and Wauberg



Alachua County Environmental Protection Department's Water Quality Sampling Locations

Legend

- Sample Locations
 - Orange Creek Bas
 - Santa Fe River Ba
- Roads
- Lakes
- Streams



DISCLAIMER: This map and the spatial data it contains are made available as a public service, to be used for reference purposes only. The Alachua County Environmental Protection Department provides this information "AS IS" without warranty of any kind, implied or expressed, regarding accuracy, completeness, or fitness of use. The quality of the data is dependent on the



Alachua County
Environmental Protection Department

Water Resources Program

Groundwater

Groundwater and Springs

Semiannual sampling with a focus on Santa Fe River springsheds

FDEP Watershed Monitoring

Three in Alachua County and one in Marion County

Floridan Aquifer Potentiometric

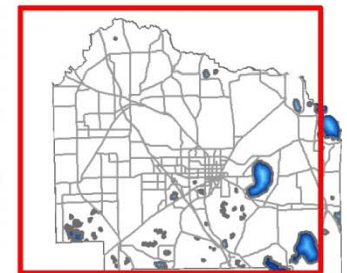
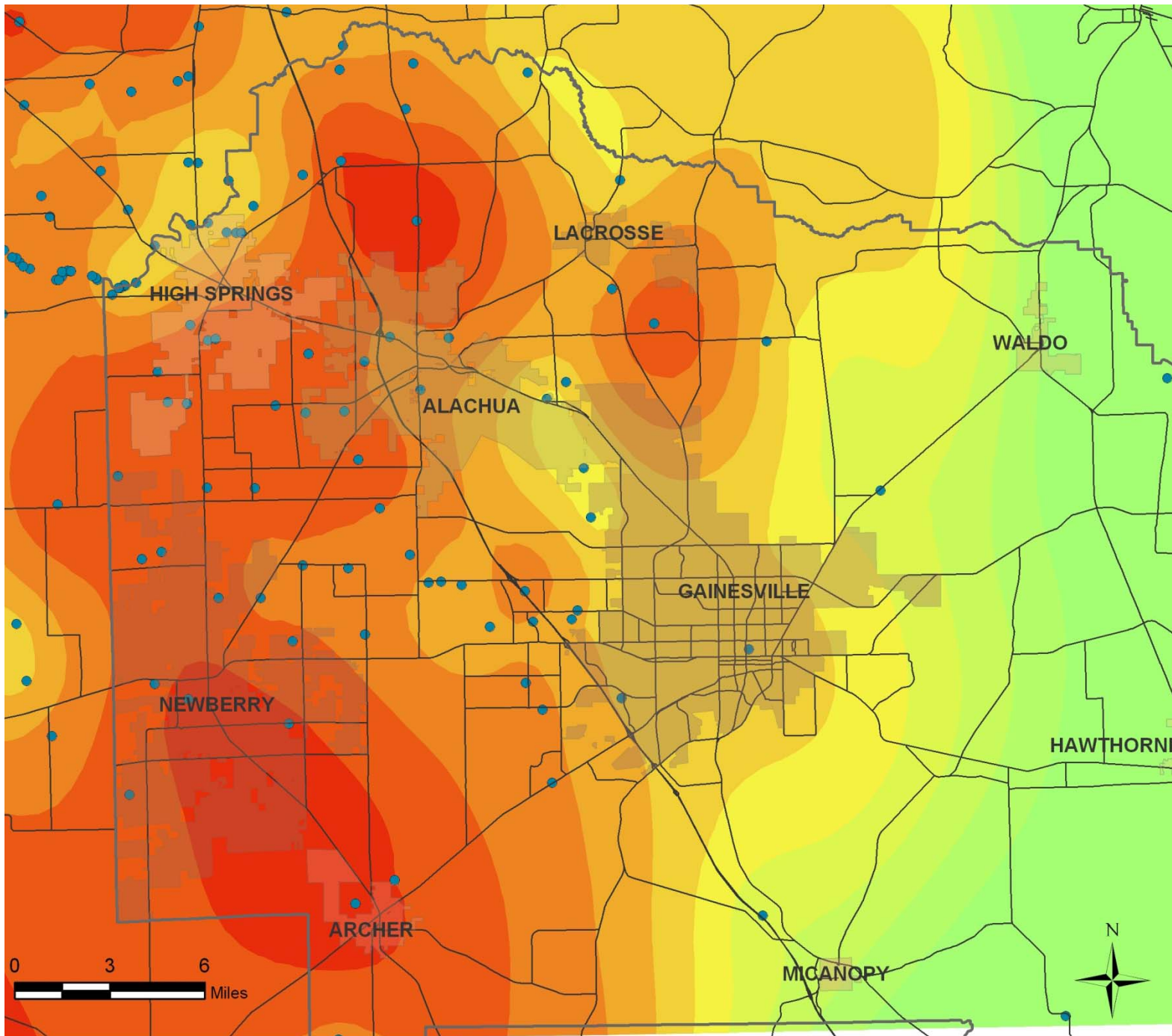
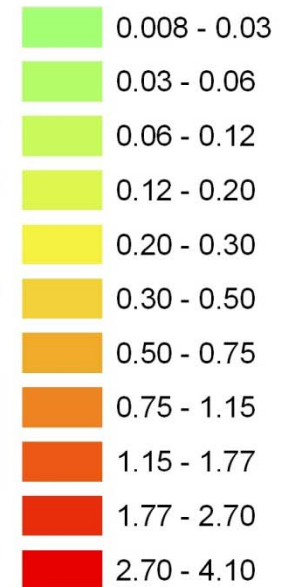
Coordinate and share data with water management districts and USGS





Average Groundwater Nitrate Concentrations 2005 to 2012

Estimated Average Nitrate Concentration



DISCLAIMER: This map and the spatial data it contains are made available as a public service, to be used for reference purposes only. The Alachua County Environmental Protection Department provides this information AS IS without warranty of any kind, implied or expressed, regarding accuracy, completeness, or fitness of use. The quality of the data is dependent on the



Groundwater Levels in the Upper Floridan Aquifer September 2011

Legend

County Boundary

Roads

Water Levels

Extremely Low

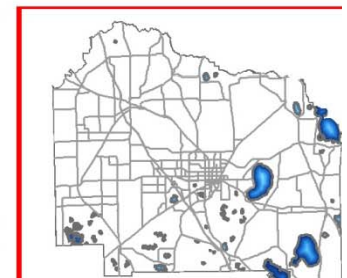
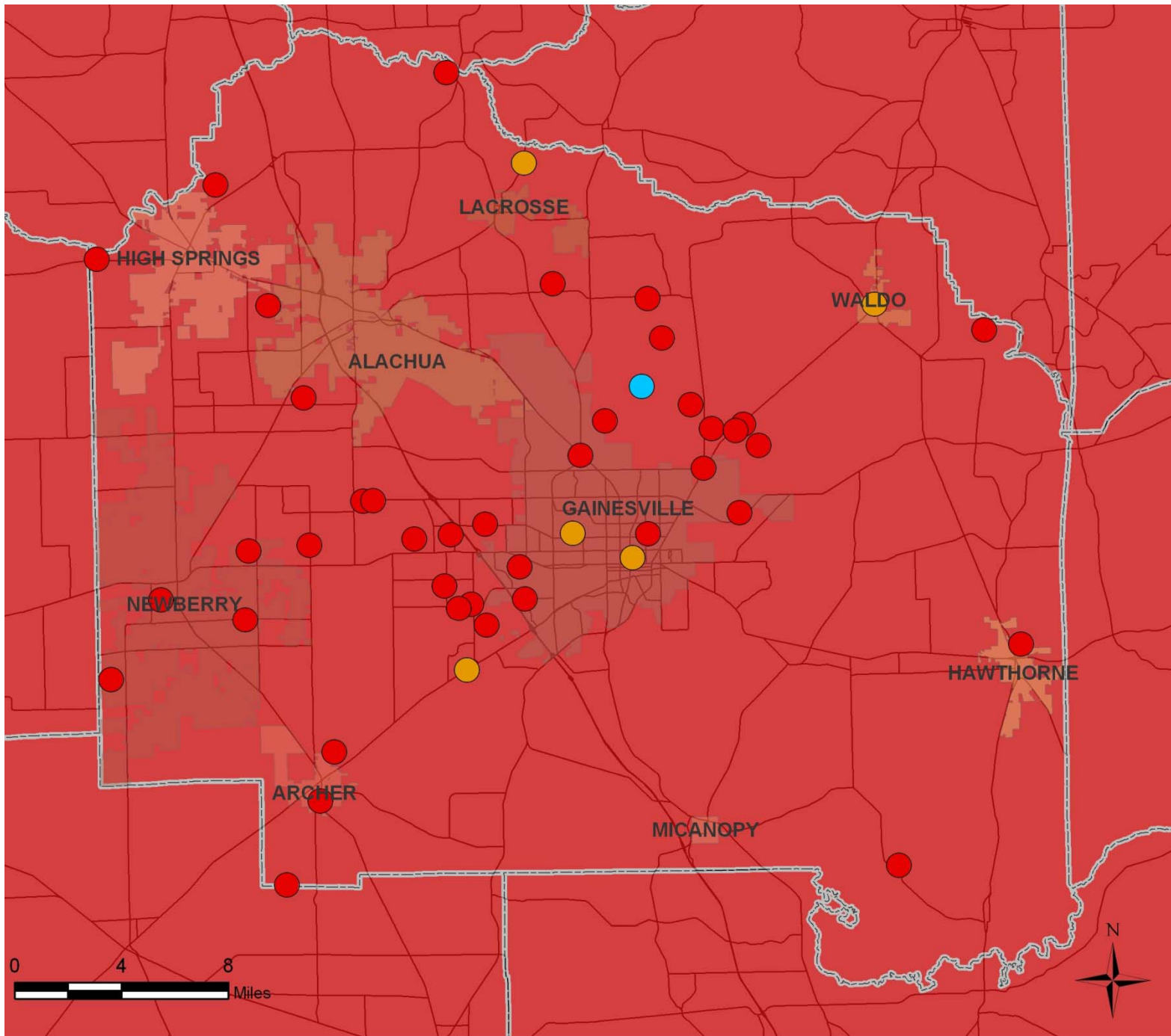
Percentile

More than 75th

25th to 75th

10th to 25th

Less than 10th



DISCLAIMER: This map and the spatial data it contains are made available as a public service, to be used for reference purposes only. The Alachua County Environmental Protection Department provides this information AS IS without warranty of any kind, implied or expressed, regarding accuracy, completeness, or fitness of use. The quality of the data is dependent on the



Alachua County
Environmental Protection Department

Water Resources Program

Outreach and Education





Alachua County
Environmental Protection Department

Water Resources Program

Research and Publications

- Research

 - Santa Fe River Springshed Mapping

 - Nitrogen isotope study with FDEP

 - Poe and Hornsby springs conductivity monitoring with SRWMD

 - Pet Waste and Landscaping Debris Social Marketing

 - Water Use Domestic Self-Supply

- Publications

 - [Alachua County Creek Fact Sheets](#)

 - [Best Management Practices](#)

 - [Reports](#)



Alachua County
Environmental Protection Department

Water Resources Program

Issues

- Water Supply

Conservation / Reuse / Recharge



- Springs Protection

[Septic Tank Inspections \(HB 1263\)](#)

